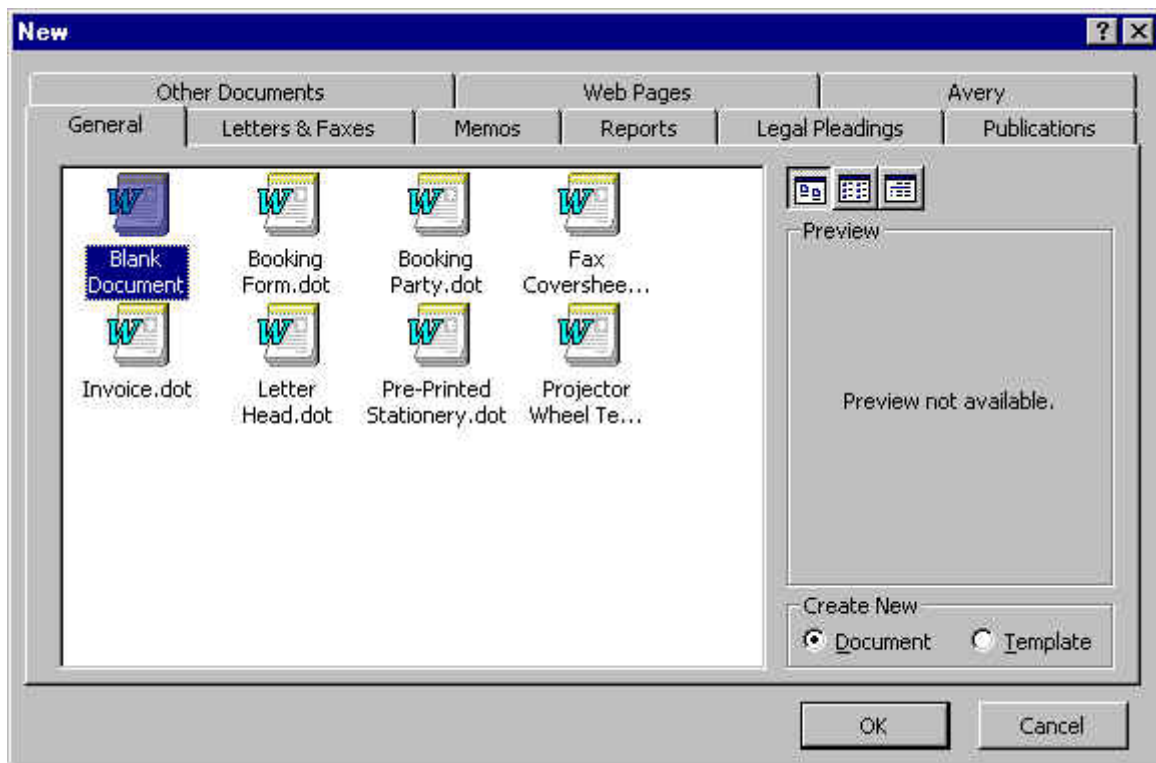


HOW TO MAKE YOUR OWN PROJECTOR WHEELS

Step 1 - If starting without a template : Open a new Microsoft word document by Open Microsoft Word '97 by selecting File - New. You should see a screen like the one below. Now double click on Blank Document

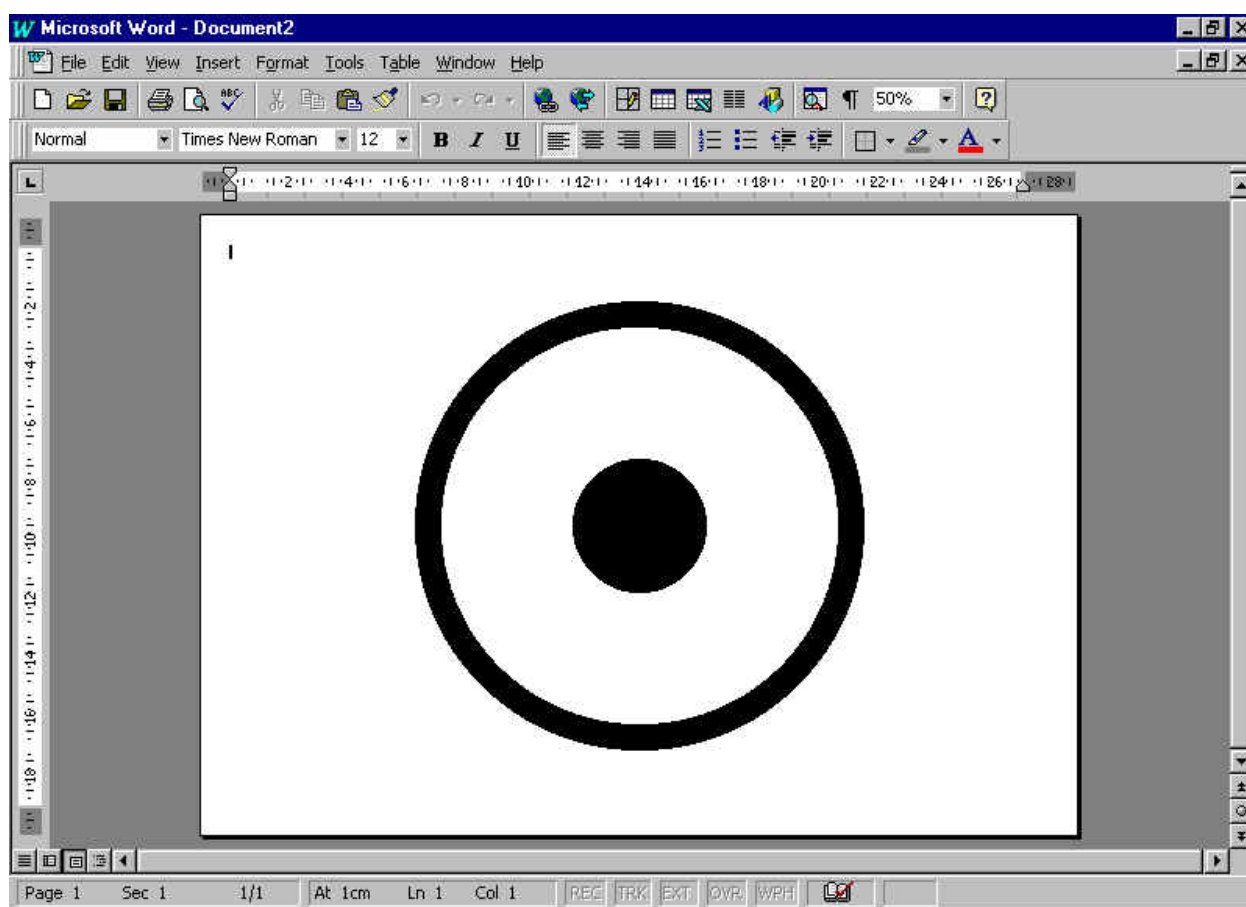
Step 1 - If starting with a template : Double click on your wheel template.



Step 2 - If using a template you should have a document on the screen like the one below.

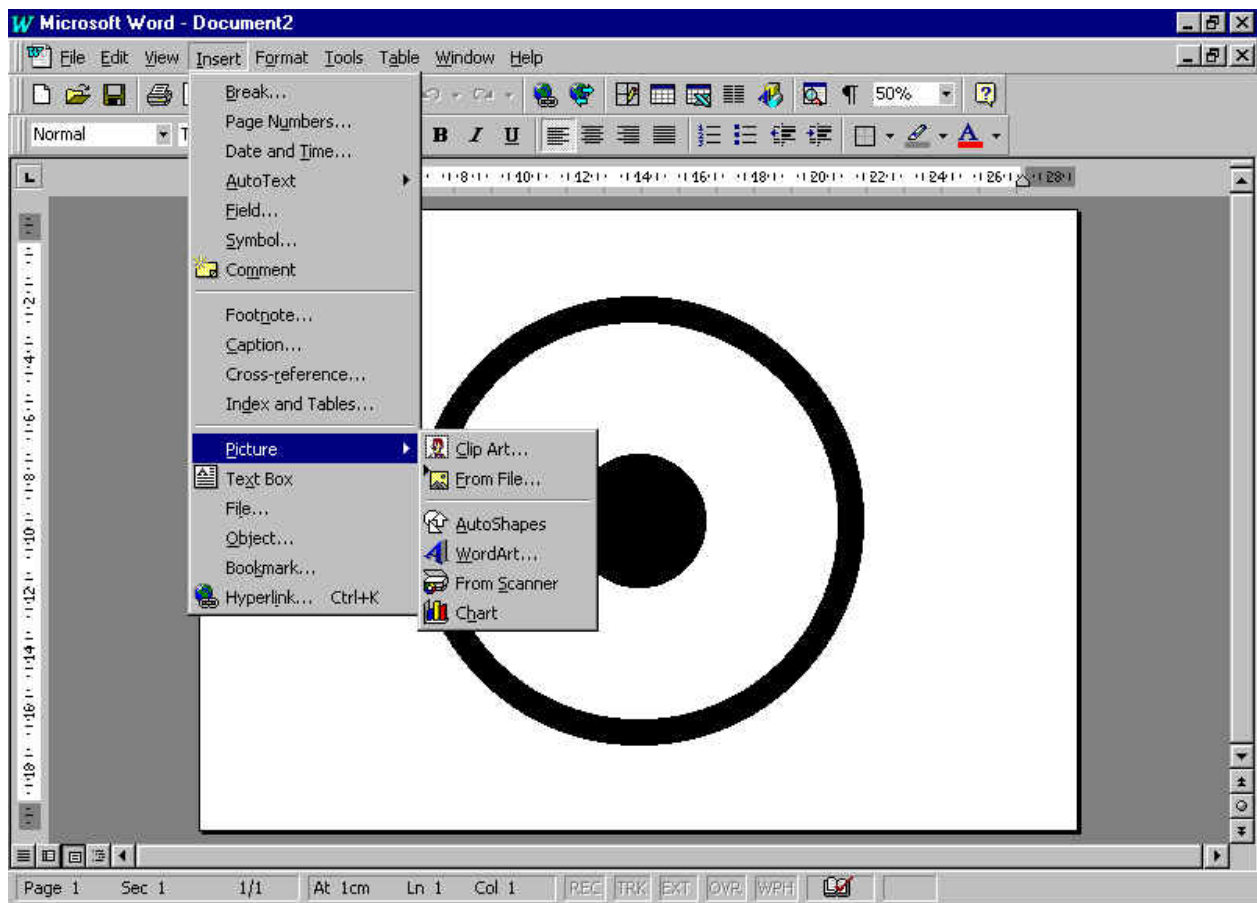
Step 2 - If you have created a new blank document you will need to draw a circle approximately 6 inches in diameter. If you are not sure about the size, draw the circle to the size you think may be correct, and then print it out on to paper before you start to add clip art. You may wish to finish the circle by adding a center circle for a guide when importing clip art.

Whichever way you achieve it, the picture you have on your screen should look like the one below!



Step 3

To start importing clip-art, click Insert - Picture - Clip Art

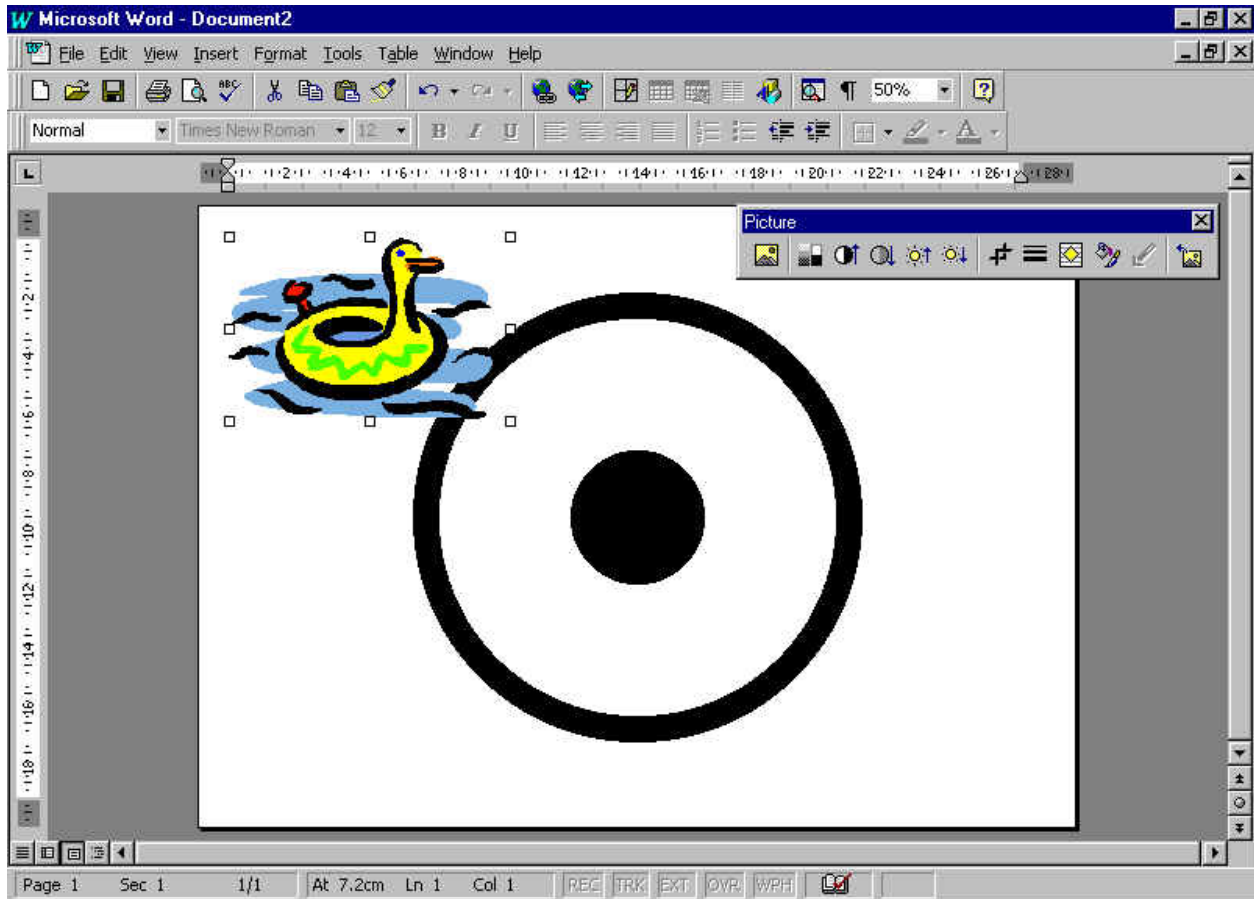


Step 4 - A window like the one below will appear. Scroll through the different images until you find an image that you would like to use.



Step 5 - Double-click the chosen image and it will appear in your document as below.

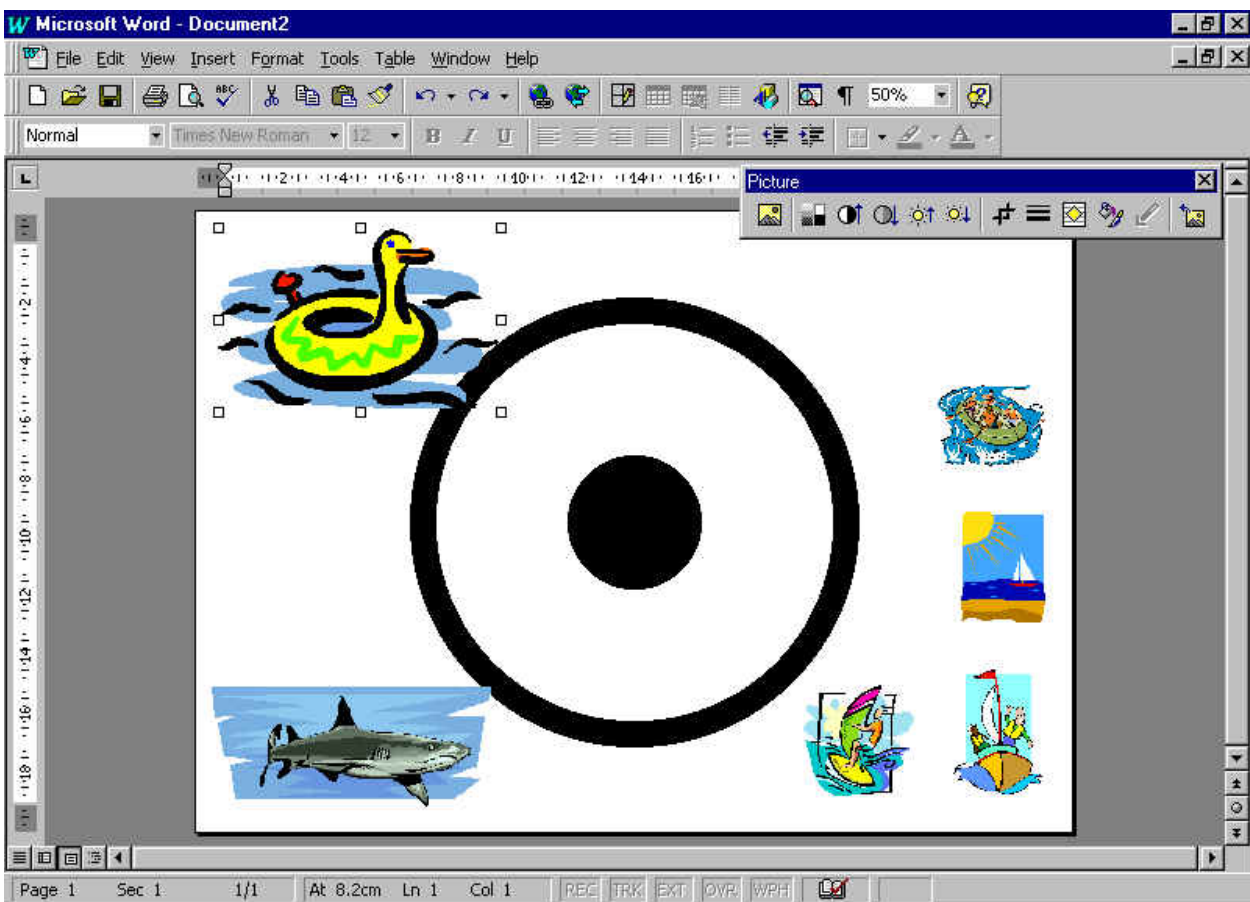
Click on a blank area of the page and Repeat Step 5 to add more Clip Art.



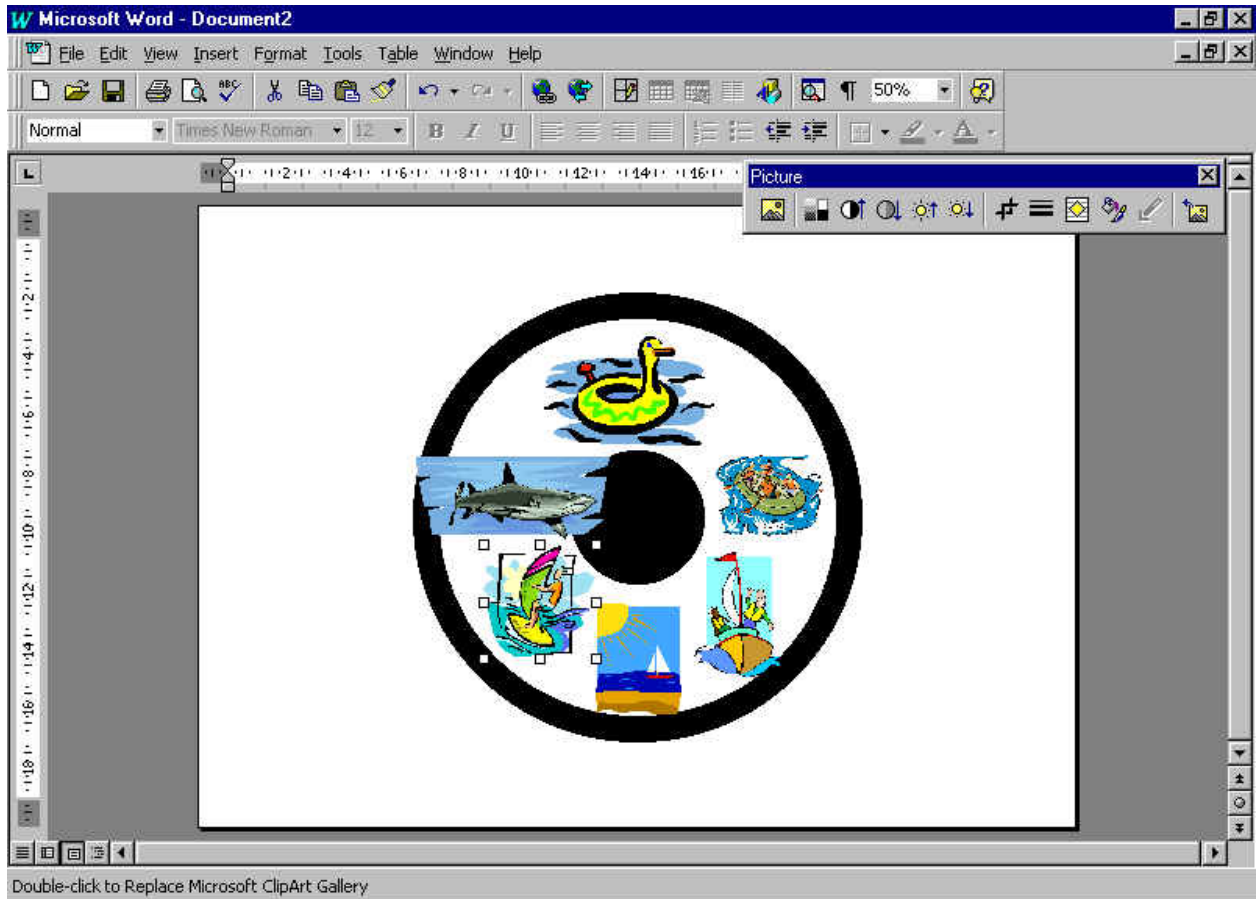
Step 6

Now that we have imported all the images that we want we can start arranging them. First move the mouse over an image and click and drag to a blank area of the screen but not in the large circle if possible. Repeat this for all the images.

Some of the images may be too large or too small, you can resize them if necessary, to do this click on the image and boxes will appear around it's perimeter if you click on one of the corner boxes you can click and drag to change the size of the image as below.



Step 7 Once all images have been resized to fit the wheel click and drag to move them to their rough places.

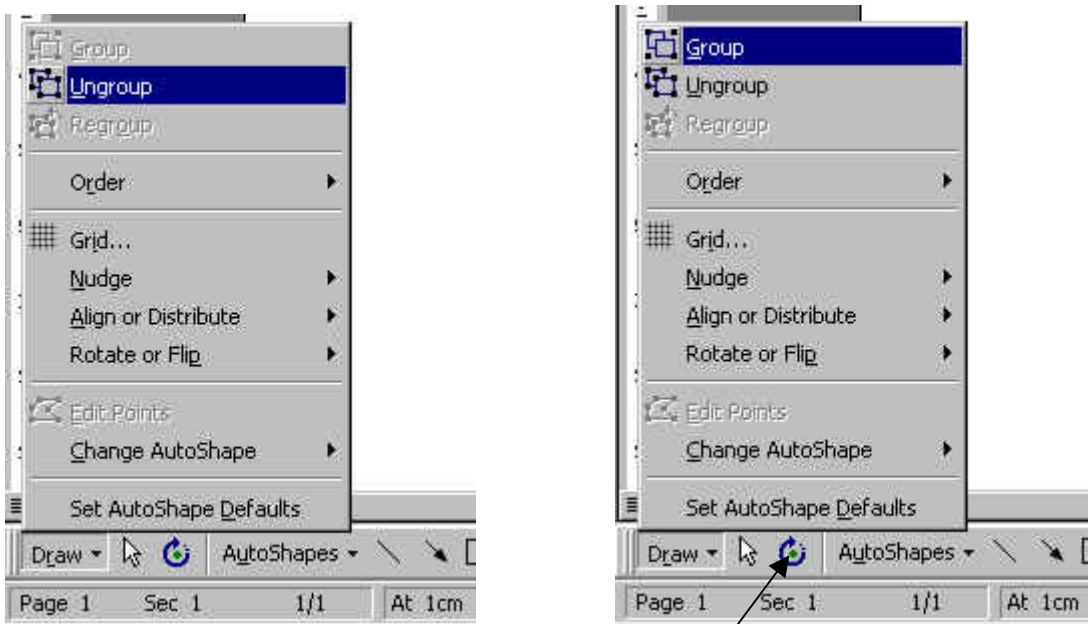


Step 8 for the wheel to work in a Solar 250 or K1 projector we need to rotate some of the images so that the bottom of the image is on the inside of the wheel. To do this we need some tools, to view the Drawing tools click on the icon on the toolbar shown below.



A toolbar will appear at the bottom of the screen.

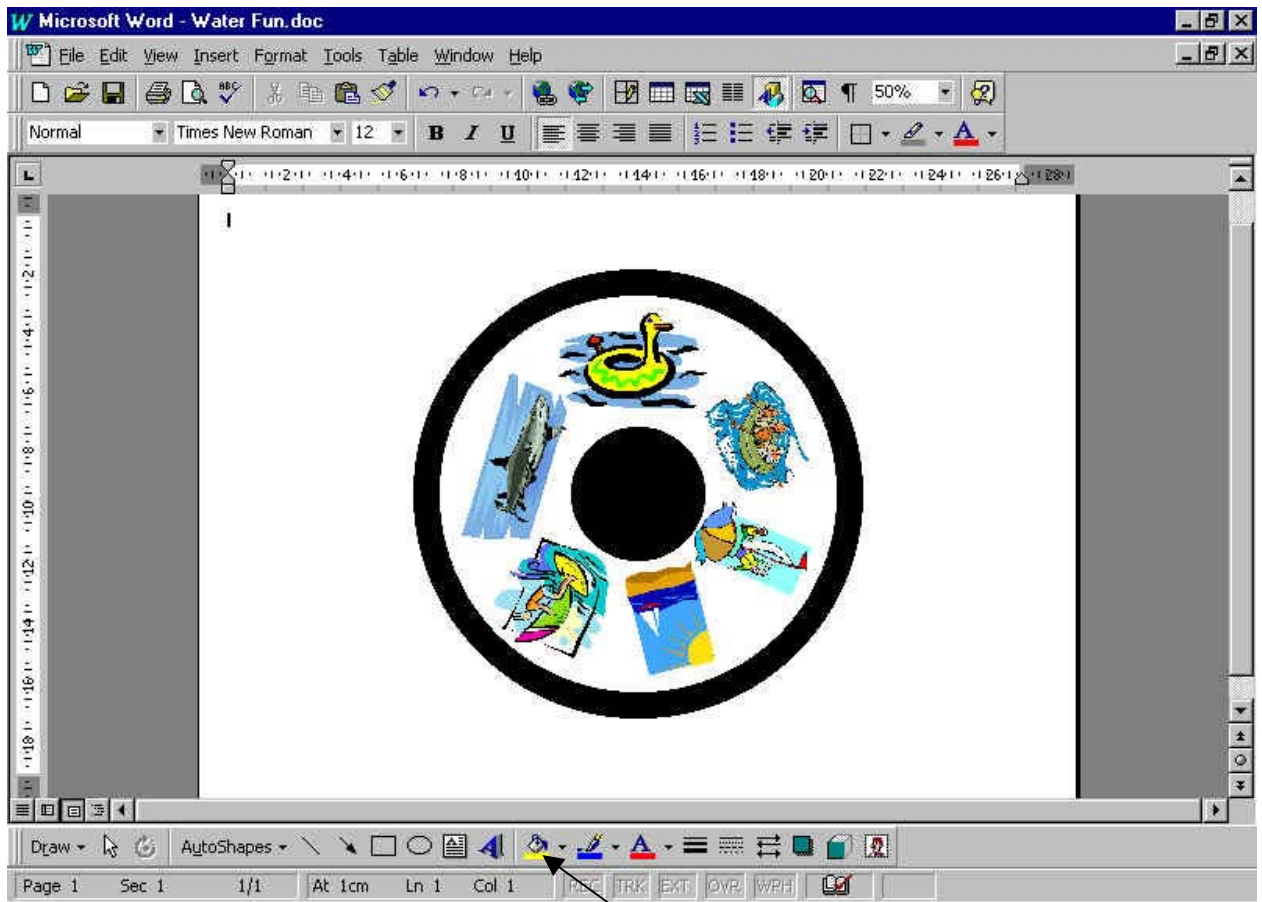
To rotate an image select the image by clicking on it, then click **Draw - Ungroup** and then **Draw - Group** this unlocks the image for editing.



Now if we click on the rotate icon, as shown, green circles appear around the selected image. And we can start rotating. Click and Drag on one of the Green circles to rotate the image to the correct position as shown on the next page.

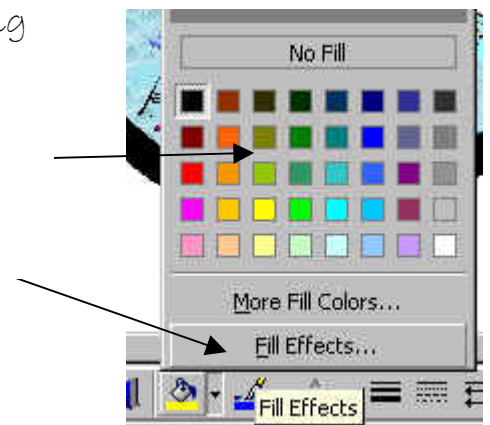


Next re-position any images that need it and save your file. Which should look something like this.

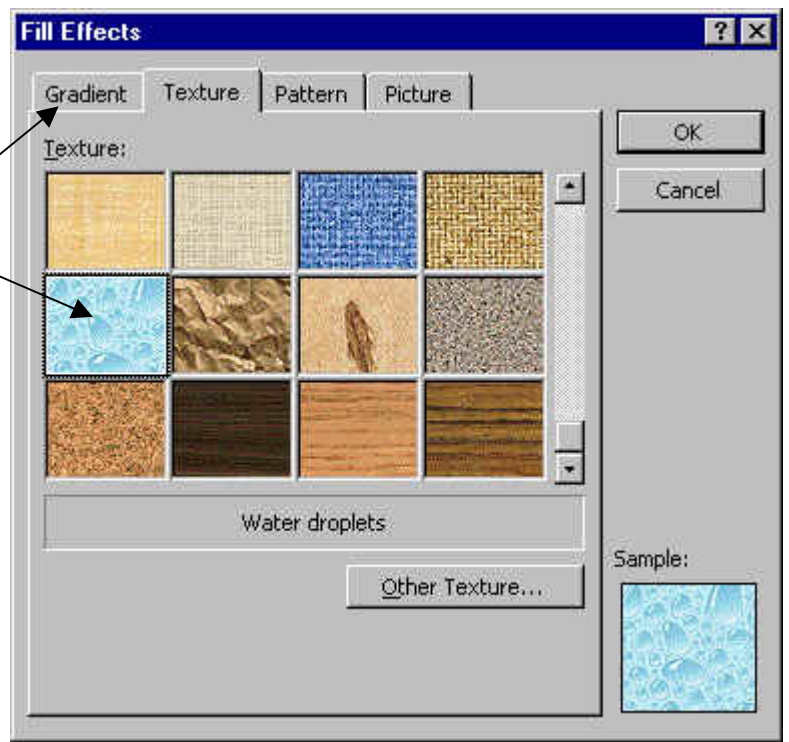


It is possible to add a fill colour or background to the wheel as an added effect. This is achieved by clicking on the wheel to select it and then clicking the **Fill** icon.

Click on a colour to change the colour or click on **Fill Effects** to add an effect.



You could click on the **Texture** tab and select a bubbles texture to go with the water theme. You could also select a **Gradient Fill**, **Pattern Fill** or **Picture**. Click **Ok**



Your wheel will be updated with your chosen fill.

Printing

NOTE: Projector wheels need to be printed onto special ink jet or laser jet acetates, make sure that you use an acetate recommended for use by your printer manufacturer using incorrect or inferior acetates can make print quality suffer and void your printer warranty.

To print on acetate select the correct setting in your printer software, if in doubt consult the manual that came with your printer. When the wheels have been cut-out insert them into blank wheels, these can be obtained from many multi-sensory equipment retailers.

Finally, attach the wheel to a 1/2 rpm rotator insert into a projector and enjoy your new wheel.

